

ARTS & ENTERTAINMENT DISTRICT



We join over 20 other communities around Maryland in celebrating the arts and culture that we have to share. Our A&E District begins at River Road in Grantsville and encompasses our crowning jewel, the Spruce Forest Artisan Village. It covers both sides of the Historic National Road, thins out past the Casselman River Bridge State Park, and expands again at First Street to include both sides of Main Street up to Hershberger Lane.

So what does this mean for our community? Well not only are we a community who is committed to preserving the rich culture that we already have, but we're looking to expand and enhance! The Garrett County Arts Council and Music at Penn Alps are two organizations that are regularly offering art and entertainment opportunities in our community. Plus, the Town of Grantsville has several properties encompassed in the district perfect for artists' residences, studios, performance venues and much more!

With the available properties come many advantages. Someone committed to enhancing our community according to the Arts & Entertainment guidelines is privy to all sorts of tax breaks and assistance. Not only that, but any art created and sold (not just in our district, but in any state district), is income tax exempt!

We would love to help you find your place in the Grantsville Arts & Entertainment District! Contact Town Hall at 301.895.3144 or visit grantsvilleaeadistrict.com to learn more.

BRIEF HISTORY

In 1785 Daniel Grant of Baltimore acquired an 1100 acre tract of land called "Cornucopia." The town of Grantsville is located in the center of this tract, named in honor of Daniel Grant. When he moved to the area in 1796 he was the wealthiest person in the county. We were part of Allegany County at that time. Garrett was established as a separate county in 1872, named after John Garrett, president of the B&O Railroad.

Little Crossings was the town center of those days. It was located where we find Stanton's Mill and the old Casselman Bridge today. Prior to Mr. Grant's arrival on the scene, this area was mostly wilderness but saw traffic from such famous men as George Washington and General Braddock. They passed through here in 1755 on their way to Pittsburgh as part of the ill-fated campaign against Fort Duquesne and the French. They had camps near Hilltop and Little Crossings. These travels prompted the construction of the Braddock Road which roughly followed the Indian trail Nemacolin's Path.

Between 1811 and 1818, the National Road was constructed along the general route of Braddock's Road. Currently Alt. Route 40, the National Road was the first federally funded highway in the U.S and brought much traffic through our area as settlers moved west. Most heavily traveled in the 1840's, an abundance of accommodations existed for the traveler, some of which can still be seen today. As part of the National Road project, the Casselman Bridge was built in 1813. A handsome stone arch, it was the largest single span bridge of its day and was used until the early 1950's. You can now enjoy its beauty from the state park at its feet.

The Casselman Inn & Restaurant



AREA EVENTS



Grantsville Days parade

PENNSYLVANIA MAPLE FESTIVAL
last two weekends of April

GRANTSVILLE DAYS
last full weekend of June

GRANTSVILLE NATIONAL ROAD FESTIVAL
third weekend in May

SPRINGS FOLK FESTIVAL
first Friday and Saturday of October

GRANTSVILLE TOWN-WIDE YARSALE
third Saturday in May
third Saturday in August

GRANTSVILLE LION'S CLUB OKTOBERFEST
first Saturday of October

SPRINGS FARMER'S MARKET
Memorial Day Weekend to
last weekend in September

AUTUMN GLORY FESTIVAL
second weekend of October

GRANTSVILLE MEMORIAL DAY CELEBRATION
Memorial Day Monday

GRANTSVILLE TRICK OR TREAT
October 31

GARRETT COUNTY GRAN FONDO
fourth weekend of June

CHRISTMAS IN THE VILLAGE & GRANTSVILLE TREE LIGHTING
first weekend in December



FOR MORE INFORMATION

To learn more about our great town and all it has to offer, call Town Hall at 301.895.3144 or go to visitgrantsville.com.

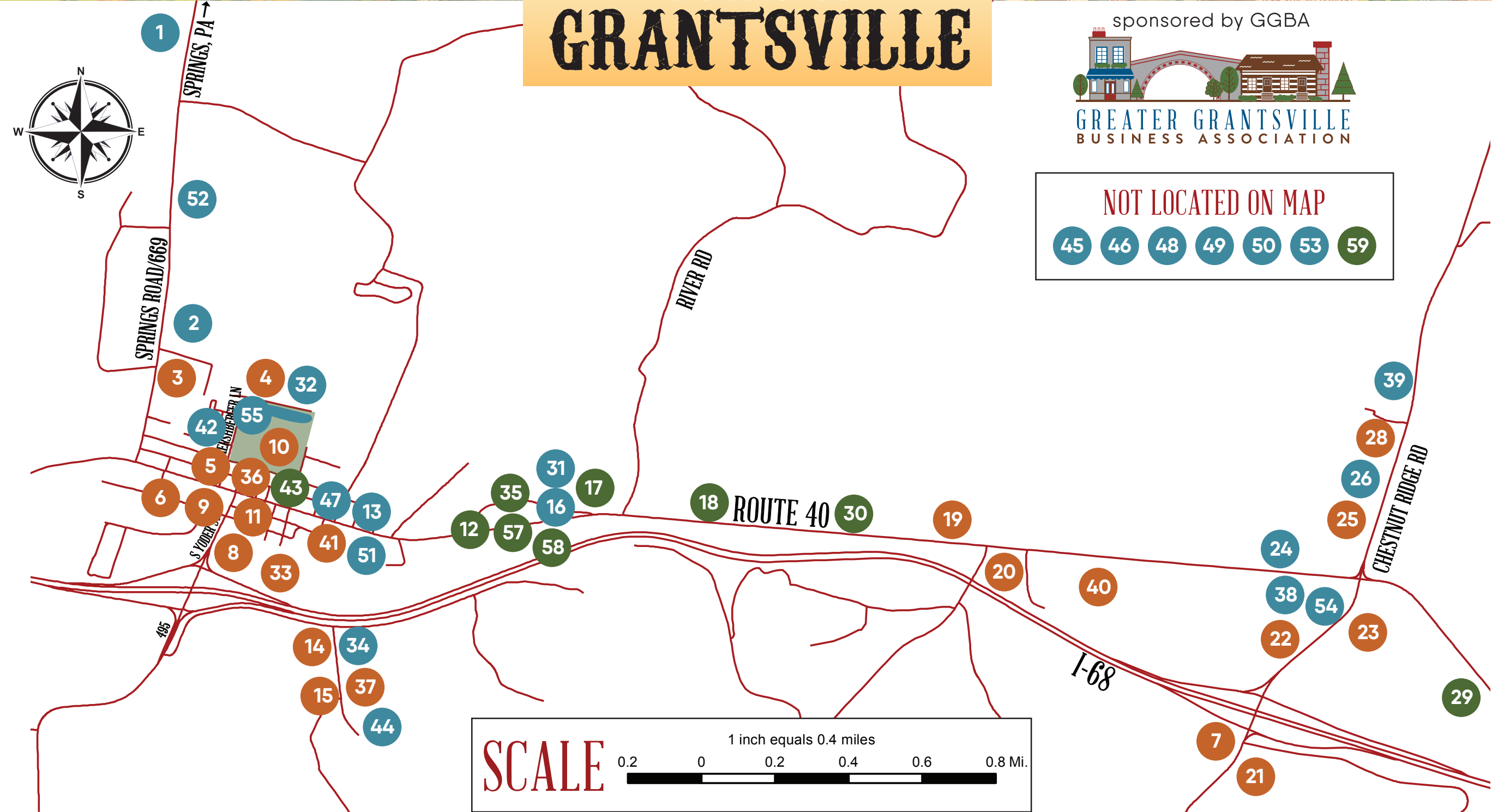


illustration by Mark Stutzman

WELCOME TO THE TOWN OF GRANTSVILLE

A FOUR SEASONS HISTORIC DESTINATION





NOT LOCATED ON MAP

45 46 48 49 50 53 59

MEMBER DIRECTORY

GGBA MEMBERS

1. Curtis Chimney & Hearth
2. High Country Creamery & Market
13. The Casselman Inn & Restaurant
16. Penn Alps Restaurant & Craft Shop
24. Hill Top Fruit Market
26. Somerset Trust Company
31. The Cornucopia Café
32. Mountain Laurel Medical Center
34. Total Biz Fulfillment
38. Medical Rehabilitation Systems
39. The Herb Barn
42. Grantsville Town Hall
44. Beitzel Corporation
45. Duane Stein II - Keller Williams Realty
46. Garrett County Department of Business Development
47. Hershberger Insurance Agency
48. Keystone Lime Company LLC
49. Savage River Lodge
50. Sunrise Sanitation Services, Inc.
51. The Print Shoppe
52. The Red Barn Events
53. Tumball, Hoover & Kahl, PA
54. Yoder-Hershberger Insurance
55. JTF1 Ice Rink

HISTORICAL ATTRACTIONS

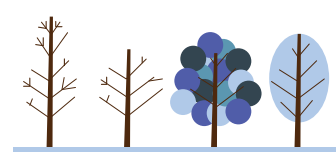
12. Casselman River Bridge State Park
17. Stanton's Mill
18. B-52 Monument

29. General Braddock's Fourth Camp
30. National Road
35. Spruce Forest Artisan Village
43. Grantsville Community Museum
57. House of Yoder Museum
58. Public Fishing Launch
59. Fuller-Baker Log House

NON-MEMBERS

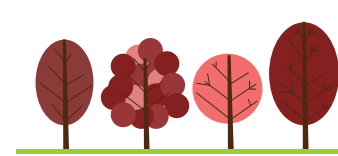
3. Grantsville Fire Department
4. Ruth Enlow Library
5. Blue Moon Antiques
6. Christ Lutheran Church ELCA
7. Comfort Inn
8. Grantsville Exxon Station
9. Grantsville Sunoco
10. Grantsville Town Park
11. Grantsville Post Office
14. Grantsville Medical Center
15. Pillar Innovations
19. T & K Auto Care
20. St. Ann's Catholic Church
21. Valero Gas Station
22. BFS Gas Station
23. Pilot Gas Station
25. Hilltop Auto
28. Casselman Market
36. First United Bank & Trust
33. Grantsville Elementary School
37. New England Truss & Joist
40. Diehl's Ford Sales
41. MST Bank

THINGS TO DO



WINTER

Bundle up and begin your morning strolling through Spruce Forest Artisan Village, especially during Christmas in the Village. Then step inside the Ruth Enlow Library - Grantsville Branch and cozy up with your new favorite book. After lunch, embrace the frozen tundra with some snowshoeing or crosscountry skiing. Run by JTF1, the outdoor rink is open daily and the gem of our park in the wintertime. From beginners to experts, the skating rink is fun for all ages.



SPRING

Enjoy the lovely spring flowers while having a cup of coffee or breakfast at The Cornucopia Cafe. In the afternoon, try your hand at fly-fishing or take a walk at Grantsville Town Park. It's the perfect way to take in the sights and smells of the season.



SUMMER

Start your day with selecting fresh produce from Springs Farmers Market, just over the border in PA. Then pack up a picnic and head to New Germany State Park. There you can fully enjoy the sunny outdoors with some fly fishing or kayaking. Check our Calendar of Events for special happenings all summerlong!



FALL

Make sure not to miss the annual Springs Folk Festival, full of special events and hand-crafted magic! Fully take in the foliage with a driving tour or bike ride. For those wanting to learn the area's history, be sure to visit the Grantsville Community Museum.

A FOUR SEASONS HISTORIC DESTINATION

TOWN OF GRANTSVILLE